



REPI

UNITED STATES DEPARTMENT OF DEFENSE
READINESS AND ENVIRONMENTAL
PROTECTION INTEGRATION PROGRAM

PROJECT PROFILES

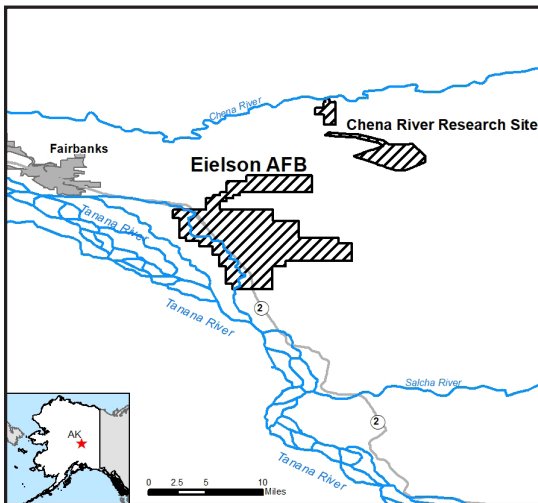
U.S. AIR FORCE | ALASKA



EIELSON AIR FORCE BASE

Eielson Air Force Base (AFB) is home to the 354th Fighter Wing, which performs close air support, battlefield air interdiction, and wartime operations support.

Eielson AFB is one of the military's most strategically located installations with two F-35A squadrons able to provide fifth generation combat-ready forces anywhere in the northern hemisphere. Located approximately 22 miles from Fairbanks, the main installation of Eielson consists of almost 20,000 acres to support core missions. The base also manages almost 38,000 acres over four other locations in the area.



Despite the area around Eielson AFB being primarily undeveloped, most of the properties surrounding the base are zoned such that any type of development can occur with very little restriction. Population growth in the area could quickly result in increased residential and commercial development around the base and disruption to the installation's training mission. This project will protect the land surrounding the

installation from development pressures and limit radar, safety, and noise concerns that could significantly hinder the installation's fixed-wing flight capabilities.

Using project funding, partners will acquire conservation easements on critical wetland sites on private lands adjacent to Eielson AFB and the Tanana and Salcha Rivers, a major watershed that provides habitat for fish and wildlife south of Eielson. This land will be preserved in perpetuity, protecting Eielson from development pressures and limiting non-point source pollution in the Tanana River watershed.

BENEFIT SUMMARY

COMMUNITY

- Preserves Salcha River and Tanana River watershed
- Limits development pressures

MILITARY

- Reduces the risk of training disruptions
- Promotes mission sustainment



Aircraft assigned to the 354th Fighter Wing and 168th Wing park in formation on Eielson AFB (top). Due to Eielson AFB's location, the base hosts many visiting aircrews that come to conduct cold-weather training, such as the 931st Air Refueling Wing with this KC-46A Pegasus (bottom).

KEY PARTNERS

- Ducks Unlimited
- Interior Alaska Land Trust
- Salcha Delta Soil and Water Conservation District
- The Conservation Fund
- USDA National Resources Conservation Service

FAST FACTS THROUGH 30 SEP 2022

- ACRES PRESERVED:
0
- TRANSACTIONS CONDUCTED:
0
- TOTAL FUNDS EXPENDED:
0
- PROJECT STATUS:
Initiated

CONTACT

PUBLIC AFFAIRS OFFICE:
(907) 377-2116